



LAFORCE | **ELECTRONIC SECURITY SYSTEMS** *powered by LAFORCE*

DOORS • FRAMES • HARDWARE • KEYING • BUILDING SPECIALTIES • ARCHITECTURAL SERVICES
FIRE DOOR INSPECTIONS • PRE-INSTALL • INSTALL • CUSTOM PRE-FINISHING
ACCESS CONTROL • ELECTRIFIED HARDWARE • VIDEO SURVEILLANCE • ALARM SYSTEMS



ABOUT LAFORCE

Established in 1954, LaForce is a leading distributor of commercial door opening products, services, and security solutions in the United States. In our 65+ years of business, we have added additional locations, products, and services to support our customers' growing needs. We have experience in new commercial buildings, additions, remodels, and retrofit projects. We work with a wide variety of industries including:

- Education
- Healthcare
- Manufacturing
- Government Buildings
- Multi-Family Housing
- & More

We are a solutions provider - from doors, frames, and hardware to architectural services, pre-installation services, electronic security solutions, LEED requirements, building specialties, and fire door inspections - we do it all. We value doing things right the first time, while building strong relationships with our customers. Our team will stay with you from the beginning of the project to the very end.

Additionally, we have teams that specialize in specific tasks which allows for high levels of expertise and faster response times in all areas of our business and manufacturing processes. You can be confident that we will provide products that are functional, code compliant, and meet your building's architectural design.

DID YOU KNOW?

Our Small Projects team can handle projects that require a quick turnaround time, typically 10 door openings or less. Benefits to working with our team include:

- Decreased lead time for shop drawings
- Consistent communication with a highly trained individual that will work on the project from start to finish
- Can easily accommodate new construction or remodel jobs

LAFORCE & SUSTAINABILITY

LaForce is actively involved in LEED (Leadership in Energy and Environmental Design), with many of our projects being LEED-certified facilities. We have a team of accredited LEED AP Building Design + Construction specialists that can provide the most current information to customers.



LaForce focuses on creating a sustainable business by recycling nearly 100% of wood pallets, cardboard, aluminum, and scraps such as steel, stainless steel, brass, and bronze. Our pre-install service is a great example of our sustainable focus. It allows us to install mechanical and electrified hardware onto doors prior to shipping, so we can recycle all the packaging material in our shop.



In addition, LaForce has a team of Continuous Improvement Business Analysts who focus on lean education and process improvements, to maximize sustainable practices and efficiency.

LEED AP® and the LEED AP logos are trademarks owned by the U.S. Green Building Council® and are used with permission.

NOTEWORTHY PROJECTS

- Hyatt Dual Brand Hotel - Tampa, FL
- 900 West - Chicago, IL
- The Hub - Champaign, IL
- Javon Bea Hospital - Riverside - Rockford, IL
- Highland Park Hospital - Highland Park, IL
- Apostolic Church - Chicago, IL
- United Center Heisler Restaurant - Chicago, IL
- The NeuroDiagnostic Institute - Indianapolis, IN
- Parkview Hospital - Fort Wayne, IN
- Bankers Life Fieldhouse - Indianapolis, IN
- Little Caesars World HQ - Detroit, MI
- UP Health System - Marquette, MI
- Beaumont Health HQ - Royal Oak, MI
- HELLA Tech Center - Northville, MI
- McLaren Macomb Hospital - Mt. Clemens, MI
- Thrivent Financial - Minneapolis, MN
- Bloomington Central Station - Bloomington, MN
- Harrah's Casino Hotel - Cherokee, NC
- Knox Community Hospital - Mt Vernon, OH
- Licking Heights High School - Pataskala, OH
- Duke Energy - Cincinnati, OH
- Kettering Health Network - Dayton, OH
- Gables Republic Square - Austin, TX
- The Oracle Waterfront Campus - Austin, TX
- Maravilla - Austin, TX
- Kalahari Resorts - Round Rock, TX
- UTHealth Continuum of Care Campus - Houston, TX
- Momentum BMW - Houston, TX
- Concho - Midland, TX
- Saint John's on the Lake - Milwaukee, WI
- Aurora Hospital - Sheboygan, WI
- Children's Hospital - Milwaukee, WI
- Illumina - Madison, WI
- Summit Credit Union HQ - Cottage Grove, WI
- Oakwood Village Prairie Ridge - Madison, WI
- Catalent Pharma Solutions - Madison, WI
- Blackhawk Church - Fitchburg, WI



PRODUCT PARTNERS



dormakaba

ASSA ABLOY

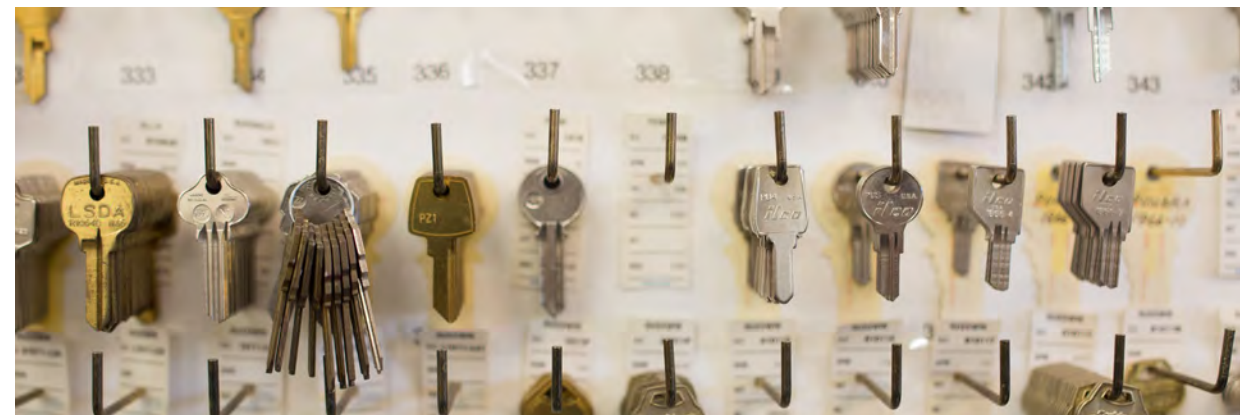




DOORS & FRAMES

LaForce offers doors and frames for new and existing buildings in hollow metal, wood, stainless steel, lead lined, fire-rated, bullet resistant, and more. We have partnerships with numerous manufacturers to supply doors, regardless of the quantity, style, and material, for your job.

Our manufacturing facilities allow us to create custom doors and frames in-house to meet the architectural design and code requirements for your building. By having in-house manufacturing, we are able to provide expedited options and control the lead times, allowing your project to stay on schedule.



HARDWARE & KEYING

Look no further than LaForce for hardware that is code compliant, aesthetically appealing, and functional. We have access to all major hardware manufacturers, including options for electrified hardware. LaForce can supply hardware that compliments historic building remodels, existing openings, and new openings.

Our keying experts design effective key systems that maintain superior building security. When planning a key system, we consider the system functions and future needs of the building.



KEY SYSTEM PROCESS

LaForce keying specialists partner with project managers to provide quality products and a convenient system.

1. Design the System

We will design the system based on the needs of the facility, while also working with special requests or needs from the owner/manager.

2. Initial Meeting

When requested by the facility manager, our team will meet with them and go over the best system to create a secure building.

3. Finalize the Plan

After the building owner chooses a key control policy, implementation plan, and record management system, LaForce finalizes a key plan to fit the personalized processes.

4. Manage the System

Once the building's key system is complete and the door locks are installed, LaForce securely stores the building's key system record for future needs.



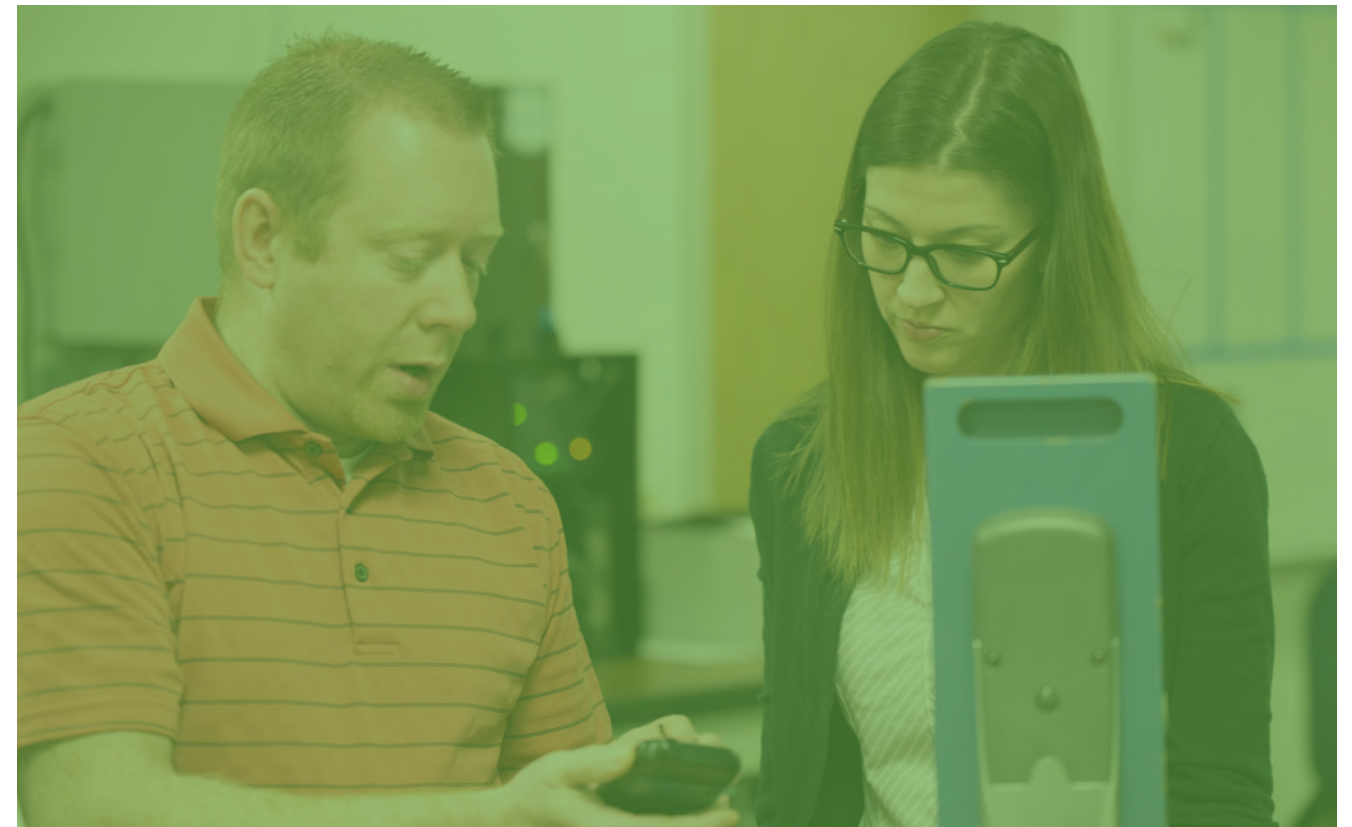
SECURITY EXPERTS TO HELP YOU MAKE SMART DECISIONS THAT BEST FIT YOUR NEEDS

There is no limit to what the Electronic Security Systems team can design. Our security experts have the knowledge, resources, and training to help secure your facility. We partner with some of the leading security product manufacturers in the industry. With these partnerships, our team can integrate products, such as access control, video surveillance, automatic door operators, and visitor management, into a single, effective, and appropriate system you can understand and afford. We receive consistent, up-to-date training, allowing our security experts to test, install, and offer ongoing technical support while assisting you in making smart decisions for your facility.

"The team at LaForce provided exceptional service when installing and configuring our access control hardware and software. They met an aggressive project timeframe and were able to work fairly unobtrusively around our students and staff during the project. The access control system works reliably, and we have good granular control over who is able to enter our campus buildings."

Gary Rodman,

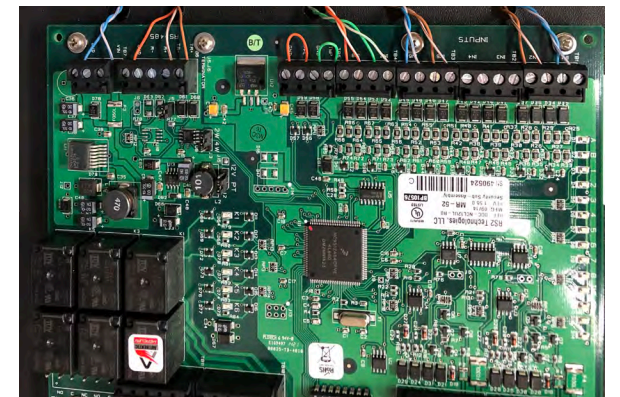
Director of Enterprise Applications at Ripon College



SECURITY SOLUTIONS

LaForce provides a wide variety of security products and services to assist in safely securing your building. Whether you're interested in installing video surveillance to monitor activity, or access control for multiple or single doors, the Electronic Security Systems team can assist you. When it comes to security, we have an extensive resume of projects with capabilities for any type of facility, from a single commercial building to an expansive campus.

- Access Control
- Alarm Systems
- Automatic Door Operators
- Electrified Hardware
- Video Surveillance
- Mobile Phone Integrations
- Design & Consulting
- Ongoing Technical Support



ARCHITECTURAL SERVICES

Architects can rely on LaForce for expert technical advice and in-depth knowledge of Division 8 (Openings), Division 10 (Building Specialties), and Division 28 (Electronic Safety and Security).

- Our consultants have relationships with all major hardware manufacturers.
- There are no fees, unless otherwise discussed.
- We provide an accurate specification with a focus on owner, contractor, and architect needs.
- We possess knowledge in building codes and standards, including IBC, NFPA, and local building codes.
- Our consultants can integrate door, frame, and hardware information into BIM systems.
- We can provide site surveys.
- We can assist in the review of submittals.
- Our consultants offer several AIA Continuing Education classes.

Our team has worked on construction designs of various types and sizes including healthcare, K-12 education, higher education, luxury residential, corporate, and industrial.

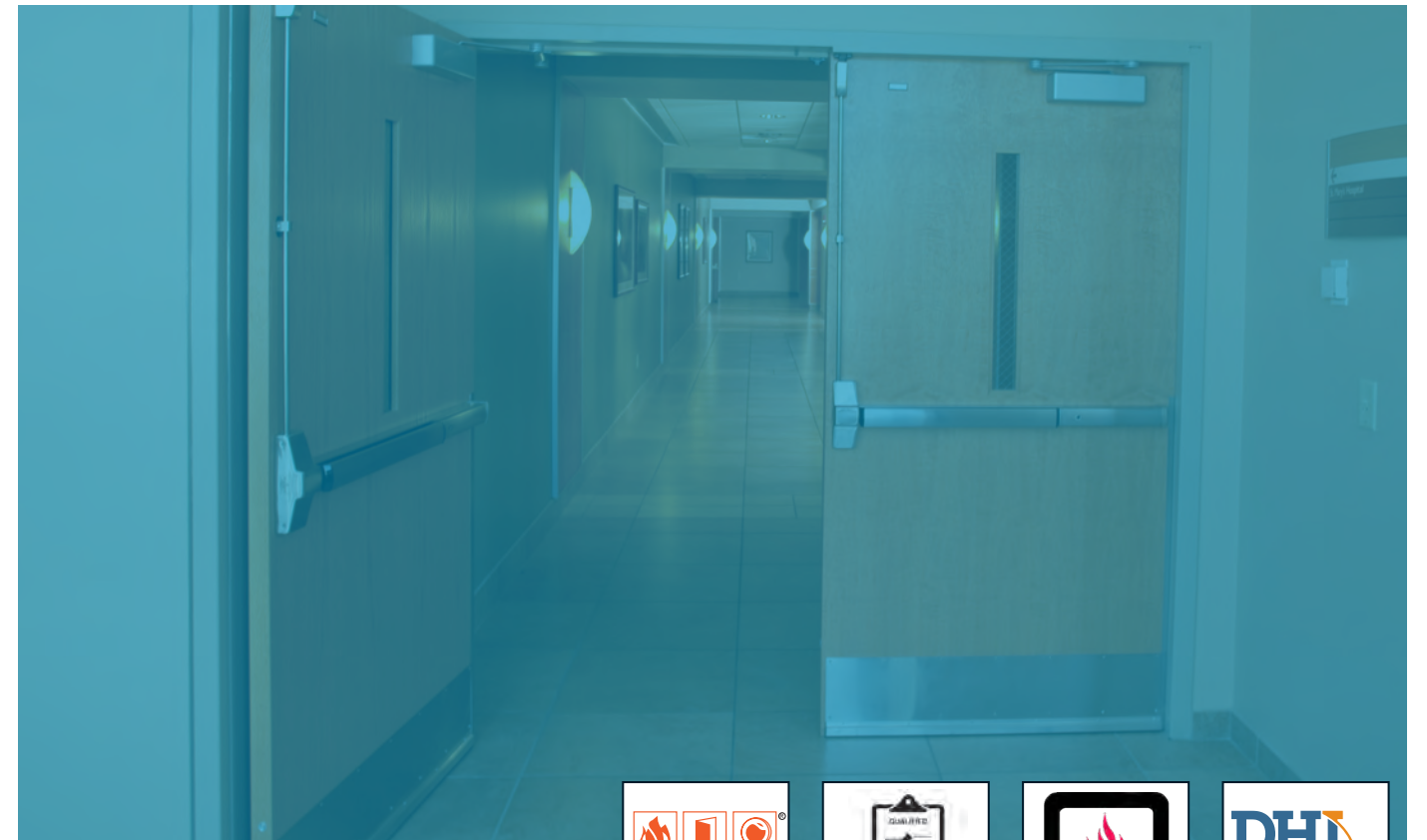


Performa, Inc., an architectural firm in De Pere WI, has worked with the LaForce Architectural Services team on a number of projects. Doug Page, co-founder and President/COO of Performa, said that they “*enjoy a good working relationship with LaForce and it really helps our business to rely on the expertise of the specification writers and technicians.*”

BUILDING SPECIALTIES

LaForce offers Division 10 products, more commonly known as building specialties. We can supply products such as toilet partitions, floor mats, lockers, bathroom accessories (hand dryers, soap dispensers, and baby changing stations), fire extinguishers and cabinets, access panels, whiteboards, mailboxes, flag poles, and more.

Our team of Division 10 experts can identify the right products and brands to fit your needs, budget, and the aesthetic of the facility.



FIRE DOOR INSPECTIONS

To be proactive and stay on top of any issues, annual inspections are encouraged on fire doors, smoke doors, and/or egress. LaForce provides fire door inspections for both new and existing buildings to ensure a safe facility.

Our team of FSAI and/or IQP certified inspectors will examine the frame, hinges, bolts, locks, exit hardware, and any other items on each fire door to ensure proper functionality and compliance. Following your fire door inspection, we will develop a custom report for your facility. We can also re-inspect openings if they are originally found to be non-compliant.



To learn more about Fire Door Inspections visit,
www.laforceinc.com/what-we-do/fire-door-inspections

PRE-INSTALL PROCESS AT LAFORCE

Pre-install is when hardware, such as hinges, door closers, exit devices, locks, electrified hardware, and flat goods, are installed onto doors before shipping to the jobsite. This service can save you time, money, and assist in a hassle-free jobsite installation while meeting deadlines. Our team of highly trained installers can catch and repair defects prior to shipping, while also contributing to sustainability and lean construction. Our pre-install doors are shipped using spacers made of 100% recyclable, sustainable, and biodegradable paper.

Recently, a cost analysis was conducted between pre-installed doors and the traditional installation method for 90 doors with 2 carpenters. The traditional installation method in the study cost \$33,615 for full installation (which included installing the hardware on-site) and took 405 hours. In comparison, the total cost and time for pre-installing the hardware and installing the doors on the jobsite was \$25,411 and 157 hours. While this example does not fit every job, it does demonstrate how there can be a significant difference between traditional installation and pre-install.



Hardware installed



Electrified hardware tested

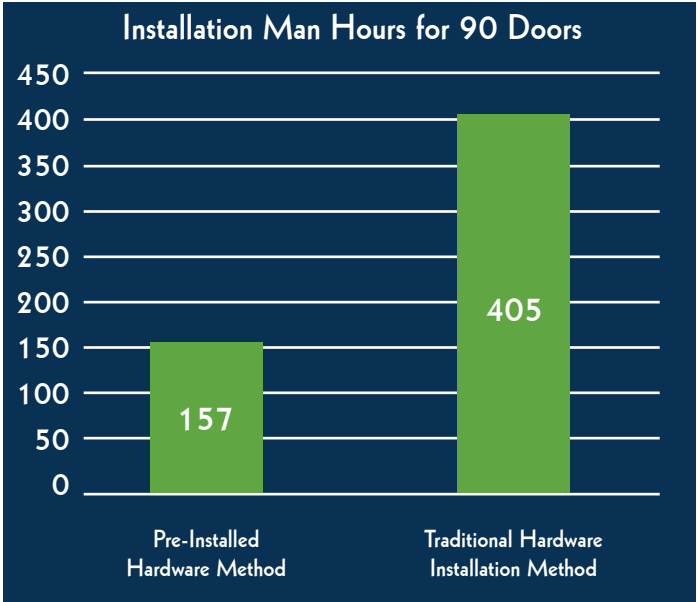


Packaged with cardboard spacers and corner guards

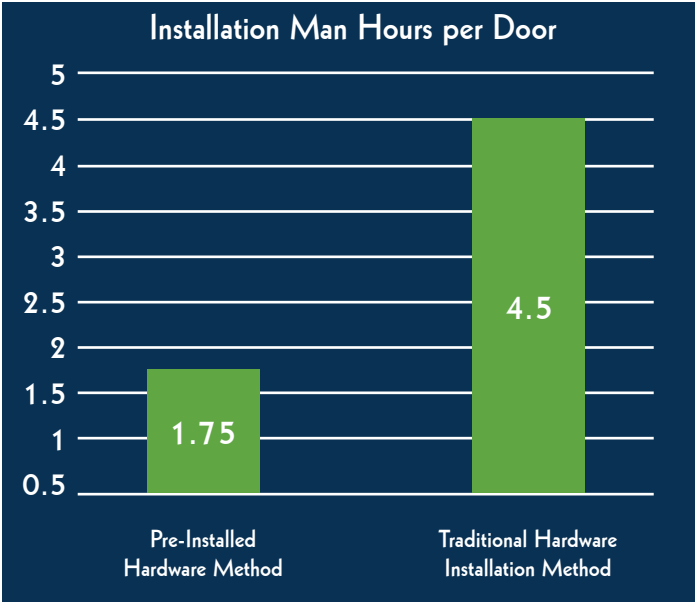


Shipped to jobsite and ready for you to install

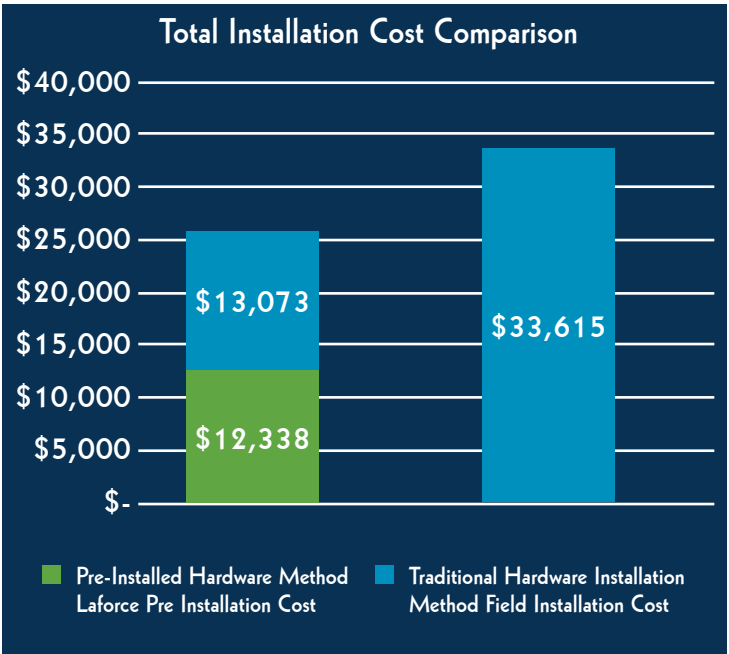
PRE-INSTALL FIELD LABOR TIME ANALYSIS



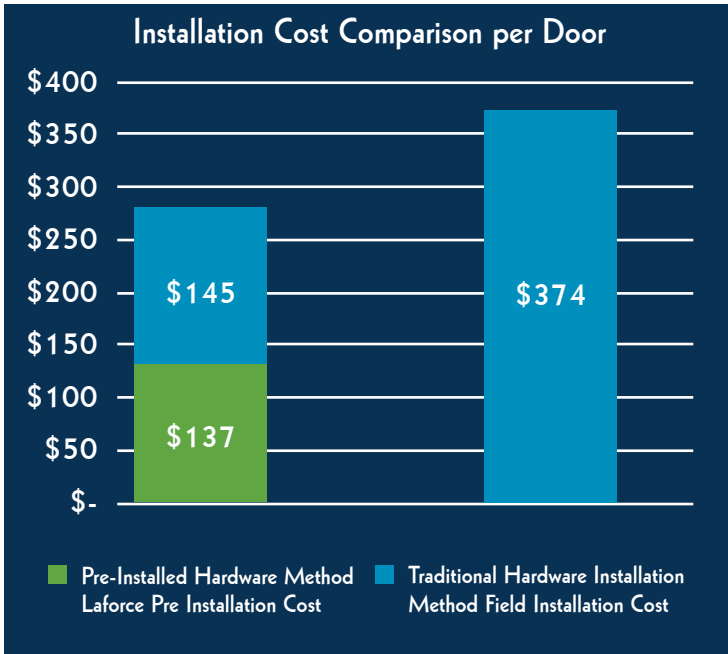
- Based on 90 doors
- Calculated hours include: unload, transportation, distribution, swing, and final adjustment
- Two carpenters



PRE-INSTALL COST ANALYSIS



- Based on 90 doors
- Based on 1.75 hr/door for pre-install method and 4.5 hr/door for traditional method



- Carpenter labor rate of \$83/hr used
- Total cost reduction was \$92/door or 25%

INSTALL

Our installation specialists provide on-site service for contractors and building owners. They travel to jobsites and expertly handle materials in an efficient, cost-effective manner. Our team also undergoes consistent training to stay up-to-date on new techniques and technologies.



PRE-FINISHING

Pre-finishing is when doors or frames are painted in LaForce's controlled environment prior to shipping to the jobsite. We offer a variety of custom paint colors to match your needs and ensure a high quality finished product, which will prevent rust and corrosion over time.



To learn more about Pre-Installation visit,
www.laforceinc.com/what-we-do/pre-finishing

LAFORCE Mission

To provide expert technical knowledge, service and door opening solutions which protect life safety and building security. We deeply value our strong relationships with business partners, clients and associates, developed through professionalism and integrity, while supporting a continuous growth culture.